

Anti-Rabbit IgG F(ab')₂ (Alkaline Phosphatase Conjugated) Secondary Antibody
Goat Polyclonal, Alkaline Phosphatase (Calf Intestine)
Catalog # ASR2633**Specification****Anti-Rabbit IgG F(ab')₂ (Alkaline Phosphatase Conjugated) Secondary Antibody - Product Information**

Description	Anti-RABBIT IgG F(ab')₂ (GOAT) Antibody Alkaline Phosphatase Conjugated
Host	Goat
Conjugate	Alkaline Phosphatase (Calf Intestine)
Target Species	Rabbit
Clonality	Polyclonal
Application	WB, E, IC
Application Note	ELISA 1:2,000-1:10,000;Western Blot 1:500-1:2,500;Immunochemistry 1:200-1:1,000
Physical State	Liquid (sterile filtered)
Host Isotype	IgG
Target Isotype	IgG F(ab')₂
Buffer	0.05 M Tris Chloride, 0.15M Sodium Chloride, 0.001M Magnesium Chloride, 0.0001M Zinc Chloride, 50% (v/v) Glycerol; pH 8.0
Immunogen	Rabbit IgG F(ab')₂ fragment
Stabilizer	10 mg/mL Bovine Serum Albumin (BSA) - Immunoglobulin and Protease free
Preservative	0.01% (w/v) Sodium Azide

Anti-Rabbit IgG F(ab')₂ (Alkaline Phosphatase Conjugated) Secondary Antibody - Additional Information**Shipping Condition**

Wet Ice

Purity

This product was prepared from monospecific antiserum by immunoaffinity chromatography using Rabbit IgG coupled to agarose beads followed by solid phase adsorption(s) to remove any unwanted reactivities. Assay by immunoelectrophoresis resulted in a single precipitin arc against anti-Alkaline Phosphatase (calf intestine), anti-Goat Serum, Rabbit IgG, Rabbit IgG F(ab')₂ and Rabbit Serum. No reaction was observed against Rabbit IgG F(c).

Storage Condition

Store vial at 4° C before opening. DO NOT FREEZE. This product is stable at 4° C as an undiluted liquid. Dilute only prior to immediate use. Freezing alkaline phosphatase conjugates will result in a substantial loss of enzymatic activity.

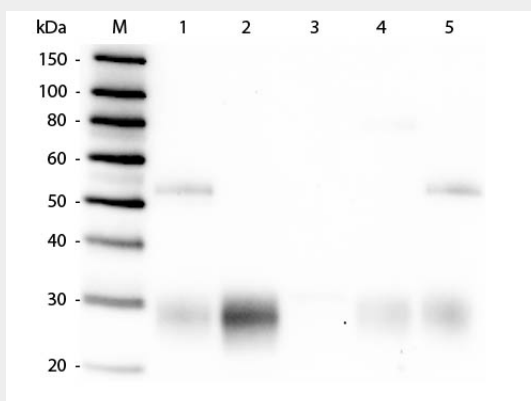
Precautions Note

This product is for research use only and is not intended for therapeutic or diagnostic applications.

Anti-Rabbit IgG F(ab')₂ (Alkaline Phosphatase Conjugated) Secondary Antibody - Protein Information**Anti-Rabbit IgG F(ab')₂ (Alkaline Phosphatase Conjugated) Secondary Antibody - Protocols**

Provided below are standard protocols that you may find useful for product applications.

- [Western Blot](#)
- [Blocking Peptides](#)
- [Dot Blot](#)
- [Immunohistochemistry](#)
- [Immunofluorescence](#)
- [Immunoprecipitation](#)
- [Flow Cytometry](#)
- [Cell Culture](#)

Anti-Rabbit IgG F(ab')₂ (Alkaline Phosphatase Conjugated) Secondary Antibody - Images

Western Blot of Anti-Rabbit IgG F(ab')₂ (GOAT) Antibody . Lane M: 3 µl Molecular Ladder. Lane 1: Rabbit IgG whole molecule . Lane 2: Rabbit IgG F(ab) Fragment . Lane 3: Rabbit IgG F(c) Fragment . Lane 4: Rabbit IgM Whole Molecule . Lane 5: Normal Rabbit Serum . All samples were reduced. Load: 50 ng per lane. Block: MB-070 for 30 min at RT. Primary Antibody: Anti-Rabbit IgG F(ab')₂ (GOAT) Antibody 1:10,000 for 60 min at RT. Secondary antibody: Anti-Goat IgG (DONKEY) Peroxidase Conjugated Antibody 1:40,000 in MB-070 for 30 min at RT. Predicted/Observed Size: 25 and 50 kDa for Rabbit IgG and Serum, 25 kDa for F(c) and F(ab), 70 and 23 kDa for IgM. Rabbit F(c) migrates slightly higher.